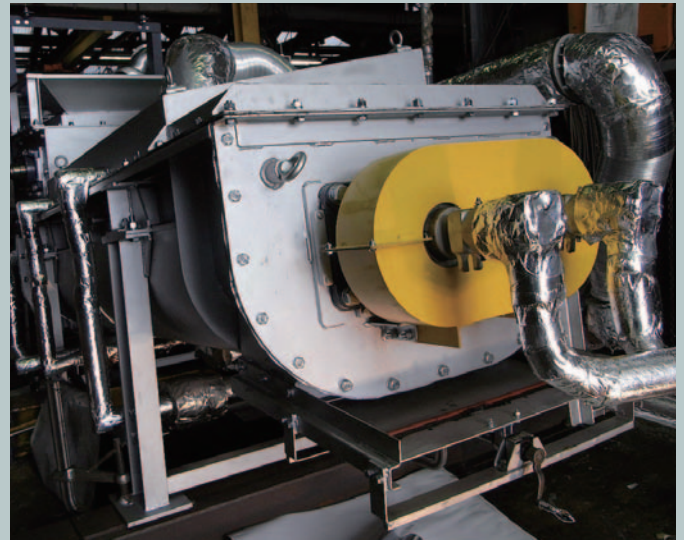
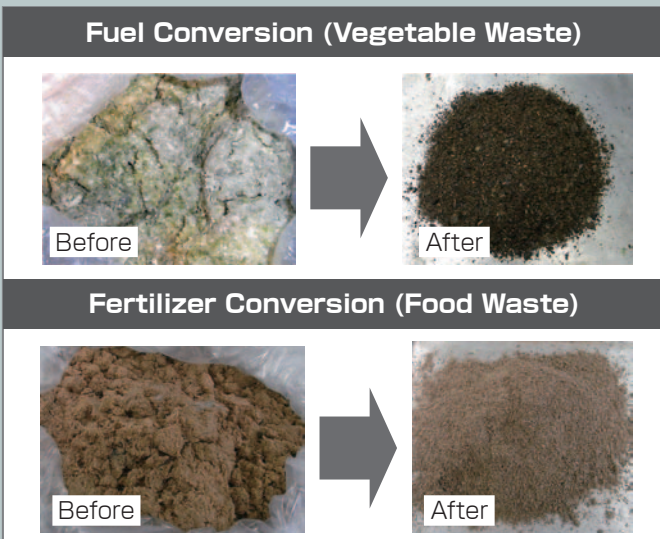


Sludge Waste New Drier [SHTS (Steam Heated Twin Screw)]

1. Dries sludge and waste for use as fertilizer, compost, feed, or fuel.
2. Waste can be recycled into fuel because its composition does not change through the low-temperature drying process.
3. Able to dry chewing gum, starch syrup or caramelized type foods without causing it to stick to, or clog the equipment.
4. Low-pressure steam drying is at least three times as efficient as hot-air drying.
The process is also safe because there is no direct use of fire.



Overview of Product / Technology

<Product Function>

Reduces water content in sludge, food waste, or other wastes to allow for use as fertilizer, compost, feed, or fuel. The low-temperature drying process using low-pressure steam is safe and does not change the composition of waste, consequently recycles waste into fuel.

<Product Features>

Special blades turn while intersecting with each other to agitate and dry waste. Adjacent blades scrape off waste stuck on the primary blades, so any sticky waste can be dried without clogging the drier. Solid waste is crushed and dried simultaneously.

<Examples of Application>

Drying high water content liquid-like sludge.

Dry food waste that would otherwise stick to and clog conventional dryers.

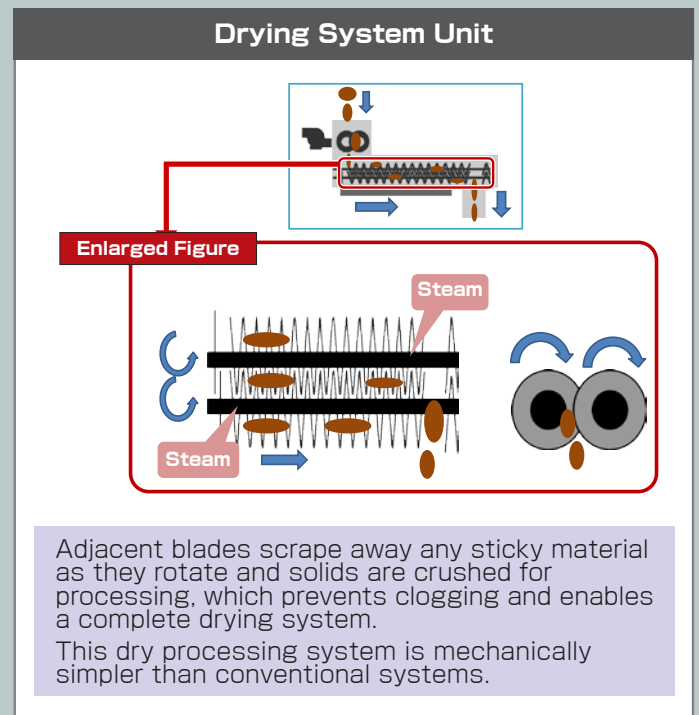
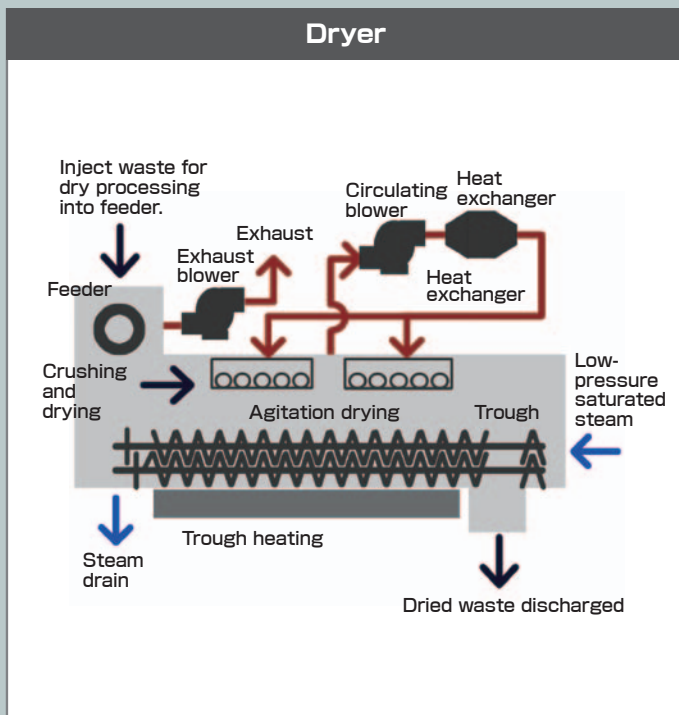
Able to crush and agitate solid objects such as cores of cabbages.

Detailed Information on Product / Technology

1. Maximum pressure of low-pressure steam introduced from the drying heat source: 0.7 MPa
2. Maximum amount of waste to be dried that can be introduced, assuming that the water content of waste is 80% before drying and 20% after drying and 0.5 MPa of steam pressure is introduced:

Maximum amount of waste that can be injected per system:

500 kg/hour (1 ton/hour for 2 systems; 1.5 tons/hour for 3 systems)



Patent Information

Japanese Patent Application: Drying System Patent Application No. 2009-298521

Overseas Distribution

- Development, design, manufacture, installation and maintenance of all industrial machinery and equipment
- Environmental machinery and equipment
Waste dryers, organic waste-to-fuel conversion systems, deodorizing systems
- Sludge dryers delivered to: Toyota Auto Body, Mitsubishi Electric, Kawasaki Heavy Industries
- Products exports to South Korea
Food waste dryers

Contact

KENKI CORPORATION

URL : <http://www.kenmori.com>

Contact Person: Hideyuki Moriyama E-mail: info@kenmori.com

Address: 3-9-7 Kamimuta, Hakata-Ku, Fukuoka-shi, Fukuoka 812-0006, Japan